



SHINING 3D

# EinScan HX2

Hybrid Blue Laser & LED Light Source  
Handheld 3D Scanner



# EinScan HX2

The EinScan HX2 enhances its predecessor's features, now boosting 13 crossed blue laser lines for more detailed scanning and an increased frame rate of 120 FPS for faster scanning. Retaining the hybrid laser and blue LED technology, the EinScan HX2 excels in accuracy, versatility, and ease of use. The EinScan HX2 is ideal for automotive aftermarket, mold manufacturing, research & education, art & culture.



**HYBRID BLUE LASER & LED LIGHT**



**HIGH ACCURACY & DETAIL**



**HIGH EFFICIENCY**



**PORTABLE & EASY OPERATION**



**FULL COLOR**



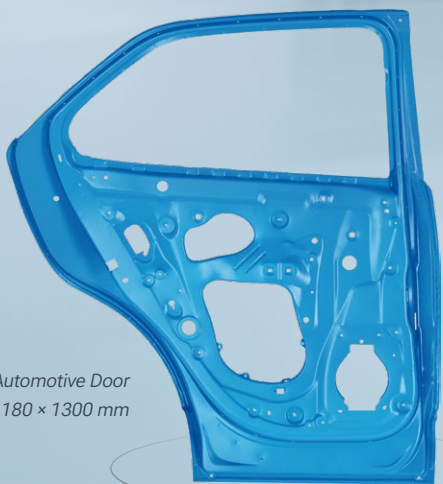
**EXMODEL**



# Hybrid Blue Laser & LED Light

The EinScan HX2 continues the innovative integration of hybrid blue laser and LED light technology, enhancing material adaptability for a broader range of applications. The advanced blue laser captures complete data from black and reflective surfaces with exceptional surface and environmental adaptability, now with 13 laser lines for more fast and detailed scans. The efficient LED light scanning requires no markers, enabling rapid 3D scanning without preparation.





*Automotive Door*  
1180 × 1300 mm

## High Efficiency

The EinScan HX2's laser scan mode reaches 1,600,000 points/s and 120 FPS, enabling rapid scans for reverse engineering, CAD/CAM, and 3D printing. It scans most objects in minutes, ensuring superior efficiency and productivity in all your 3D scanning projects.

SHINING 3D



## High Accuracy & Detail

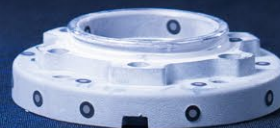
The EinScan HX2 meets the rigorous demands of industrial applications for reverse engineering and precise measurement.

*Minimum point distance of **0.05 mm***

*Accuracy up to **0.04 mm** under laser mode*



Ring Flange  
Outer Ring Radius 52 mm  
Inner Ring Radius 26 mm





## Portable & Easy Operation

The EinScan HX2 excels in portability and ease of use with its ergonomic design and lightweight build at just 710g. Perfect for both beginners and professionals, its plug-and-play functionality and user-friendly software make 3D scanning efficient and comfortable, anywhere you go.

Fire Hydrant  
68 × 68 × 620 mm

# Full Color



With a built-in color camera, it supports full-color texture capturing and tracking in rapid scan mode. Texture Mapper Lite further simplifies photorealistic texture mapping.



→  
Original



←  
Scanned data by  
EinScan HX2 &  
Texture Mapper Lite



Multicolored Shoe  
293 × 96 × 110 mm

# EXModel

EXModel is a powerful bridge that simplifies CAD modeling from 3D scanning to manufacturing. With the integration of EXScan HX, you can now seamlessly import data to EXModel with a single click after completing a scan. EXModel offers a comprehensive set of tools that enable you to create professional-grade CAD digital models that are compatible with your CAD software.



Effortless Mesh Processing



Precision CAD Creation

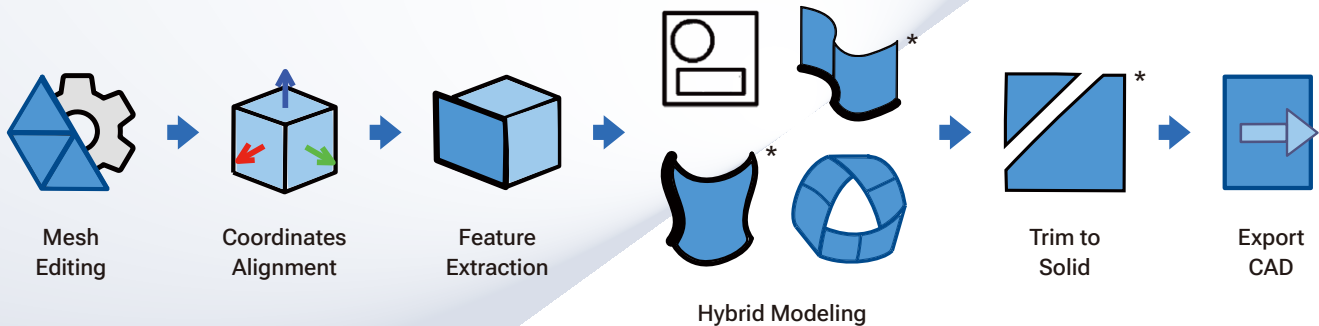
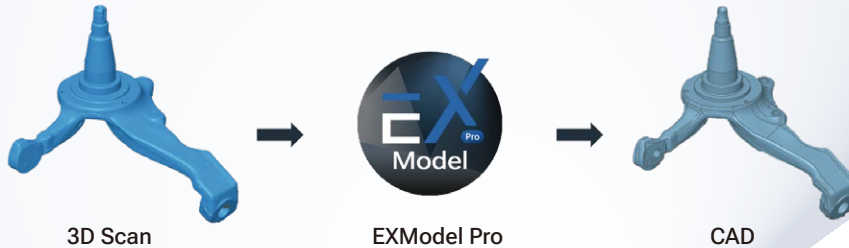


Enhanced Data Utilization



Cost-Effective Solution

## Workflow



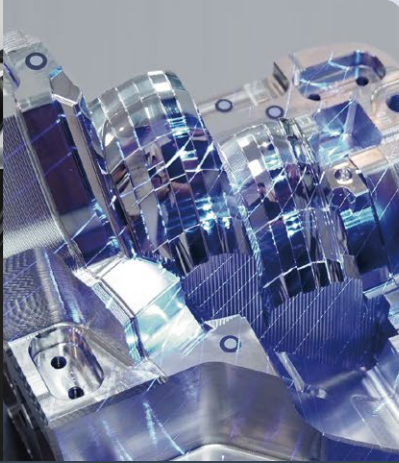
\*30 days Free Trial is available to apply to EXModel.

\*Function features marked with asterisk are available in EXModel Pro.

# APPLICATIONS



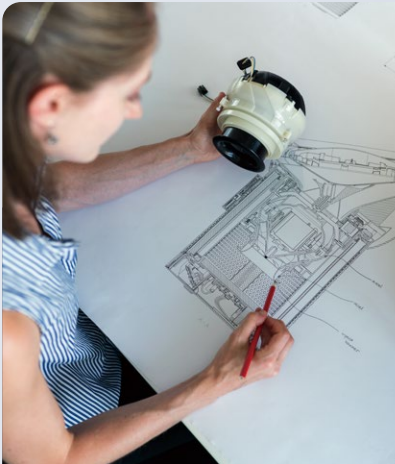
**Automotive Aftermarket**



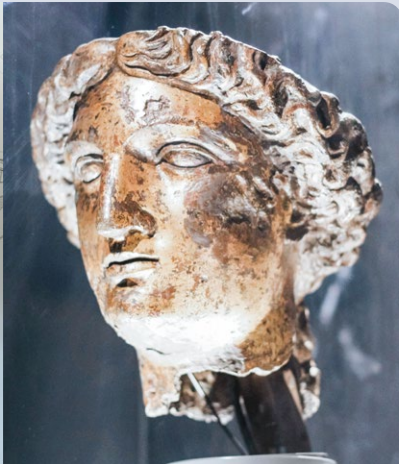
**Mold Manufacturing**



*Wheel Hub  
18 inch 8J*



**Research & Education**



**Art & Culture**



*Paddle Board  
3200 × 770 × 130 mm*

# TECHNICAL SPECIFICATIONS

## EinScan HX2

Scan Mode	Rapid Scan	Laser Scan
Light source	Blue LED	13 Crossed Blue Laser Lines
Scan accuracy	Up to 0.05 mm	Up to 0.04 mm
Volumetric accuracy	0.05 + 0.1 mm/m	0.04 + 0.06 mm/m
Point distance	0.25 mm-3 mm	0.05 mm - 3 mm
Working distance	470 mm	
Depth of field	200 mm - 700 mm	350 mm - 610 mm
Maximum FOV	420 × 440 mm	380 × 400 mm
Scan speed	1,200,000 points/s, 20FPS	1,600,000 points/s, 120FPS
Alignment modes	Markers, Feature, Hybrid, Texture	Markers
Safety	Eye-safe	CLASS II (eye-safe)
Texture scan	Built-in Color Camera	No
Included software	EXScan HX	
Connectivity	USB3.0	
Output formats	OBJ; STL; ASC; PLY; P3; 3MF	
Dimensions	108 × 110 × 237 mm	
Scanner weight	745 g	
Operating temperature range	0 - 40°C	
Operating humidity range	10 - 90%	
Certifications	CE, FCC, ROHS, WEEE, KC	
Recommended configuration	OS: Win10/11, 64-bit; Graphics card: NVIDIA RTX3060 or better; Video memory: ≥6GB; Processor: Intel i7-12700 or better; Memory: ≥32GB	
Required configuration	OS: Win10, 64-bit; Graphics card: NVIDIA RTX2060 or better; Video memory: ≥4GB; Processor: Intel i7-8700 or better; Memory: ≥16GB	